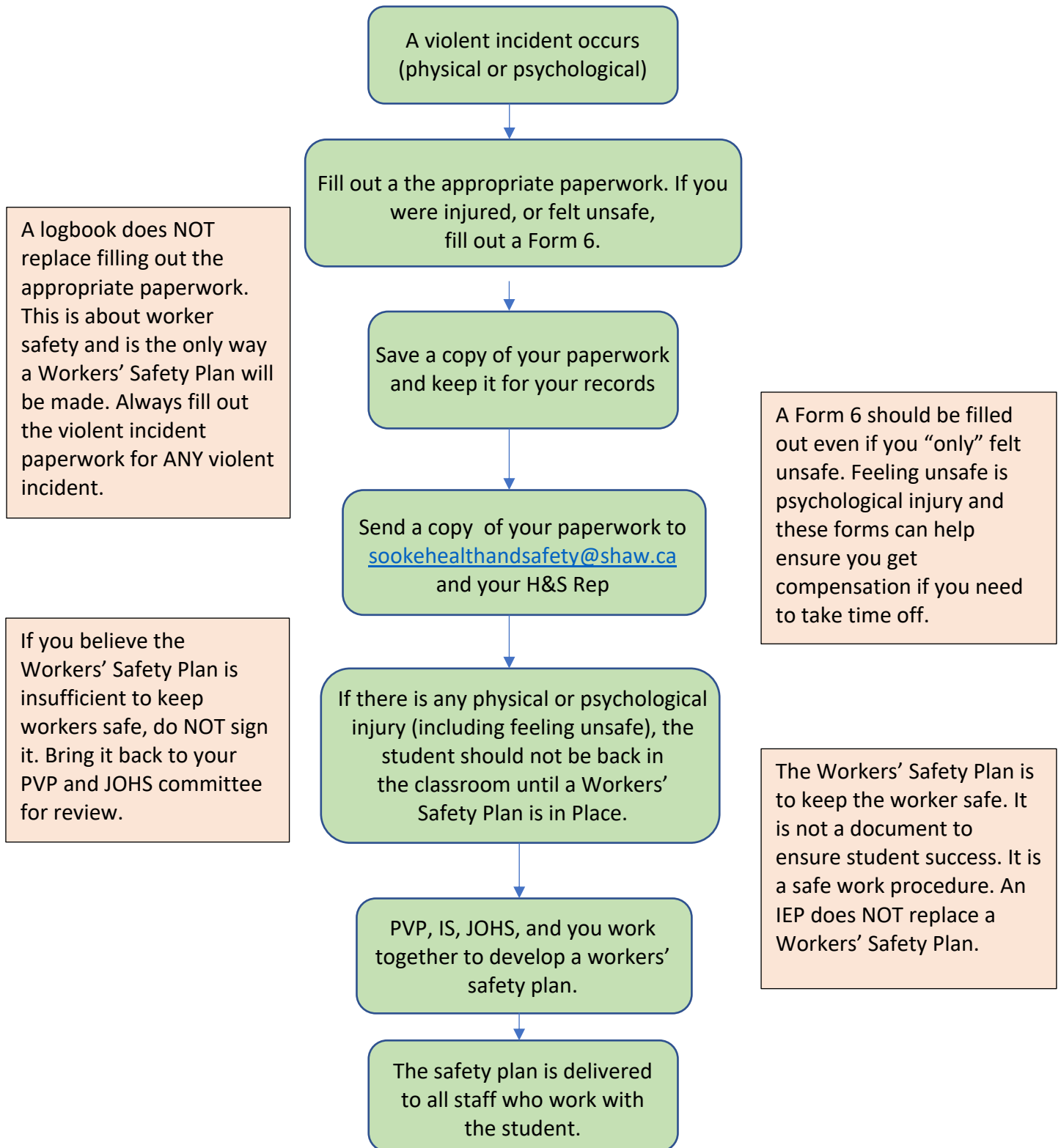


What to do in Event of a Violent Incident



A logbook does NOT replace filling out the appropriate paperwork. This is about worker safety and is the only way a Workers' Safety Plan will be made. Always fill out the violent incident paperwork for ANY violent incident.

A Form 6 should be filled out even if you "only" felt unsafe. Feeling unsafe is psychological injury and these forms can help ensure you get compensation if you need to take time off.

If you believe the Workers' Safety Plan is insufficient to keep workers safe, do NOT sign it. Bring it back to your PVP and JOHS committee for review.

The Workers' Safety Plan is to keep the worker safe. It is not a document to ensure student success. It is a safe work procedure. An IEP does NOT replace a Workers' Safety Plan.

If you need any help during this process, contact sookehealthandsafety@shaw.ca

