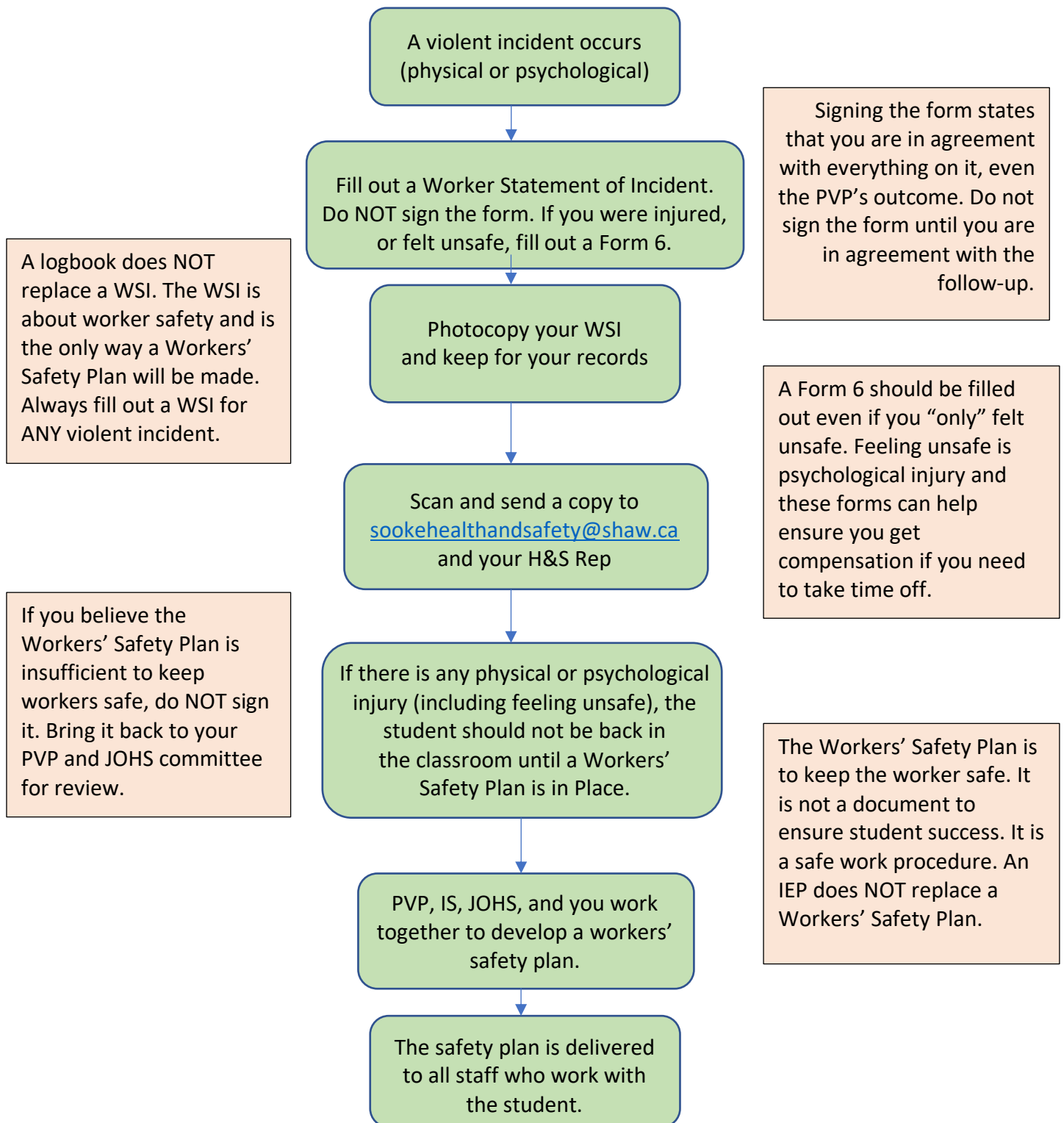


## What to do in Event of a Violent Incident



Signing the form states that you are in agreement with everything on it, even the PVP's outcome. Do not sign the form until you are in agreement with the follow-up.

A Form 6 should be filled out even if you "only" felt unsafe. Feeling unsafe is psychological injury and these forms can help ensure you get compensation if you need to take time off.

The Workers' Safety Plan is to keep the worker safe. It is not a document to ensure student success. It is a safe work procedure. An IEP does NOT replace a Workers' Safety Plan.

A logbook does NOT replace a WSI. The WSI is about worker safety and is the only way a Workers' Safety Plan will be made. Always fill out a WSI for ANY violent incident.

If you believe the Workers' Safety Plan is insufficient to keep workers safe, do NOT sign it. Bring it back to your PVP and JOHS committee for review.

If you need any help during this process, contact [sookehealthandsafety@shaw.ca](mailto:sookehealthandsafety@shaw.ca)